

Lakeland

COMMUNITY COLLEGE

PROGRAM GUIDE

Applied Studies Division

Emergency Management Planning and Administration

- Associate of Applied Science Degree in Emergency Management Planning and Administration
- Emergency Management Planning and Administration Certificate

 Opportunity
starts **HERE**
lakelandcc.edu

Emergency Management Planning and Administration



Emergency management is an umbrella term often used interchangeably with homeland security or disaster planning. Natural disasters, terrorist incidents and other devastating events prompt many local, state and federal agencies to revamp their administrative structures and response procedures as well as improve their communication plans. The demand for highly trained staff who may be called out in time of disasters has led to the quick expansion of this field in just a few years.

Career Opportunities

According to the Bureau of Labor Statistics, employment of professionals in emergency management related fields is projected to grow between six to 18 percent, depending on the employment sector and career path. Businesses and industries offer employment in emergency, disaster, or continuity of operations planning; risk management; or zoning departmental emergency planning.

Lakeland's Program

Lakeland's emergency management planning and administration program covers "all-hazards." These include natural, technological, and intentional acts. Students of the program will become skilled in reducing public vulnerability to disasters and other major events. The program is designed for both pre-service students and in-service practitioners. Students complete other courses such as English and social science at a college closer to home, and still earn an emergency management degree from Lakeland Community College or these courses may be completed online at Lakeland. Students may also have the option of the certificate format. Lakeland was the first college in Ohio to offer an associate degree program, as well as a certificate program, in emergency management planning and administration.

The Lakeland Advantage



- Lakeland's program is the only International Fire Service Accreditation Congress accredited associate degree in Emergency management planning and administration in the country.
- The program is endorsed by the FEMA Higher Education Project, the Ohio Emergency Management Agency, Lake County Emergency Management Agency, Ashtabula County EMA, Geauga County Department of Emergency Services, and the Greater Cleveland Chapter of the American Red Cross.
- Degree available online.
- Students can remain on campus to pursue a Bachelor's degree through the Holden University Center with Cleveland State University's Bachelor of Arts in Public Safety Management program.

Lakeland Community College Admission Requirements

For admission into Lakeland, students must be a high school graduate or have obtained a high school diploma equivalency. Please consult Lakeland Community College's Enrollment Guide (available on Lakeland's website at lakelandcc.edu/enrollment) for specific admissions requirements and procedures.

For more information

1.800.589.8520 • lakelandcc.edu
Professor Lee Silvi, Director
Emergency Management program
440.525.7252 • lsilvi@lakelandcc.edu
lakelandcc.edu/emergencymgmt



First Semester:

CHEM 1050.....	Chemistry in the Everyday World.....	3
OR		
PSCI 1400.....	Introduction to Meteorology.....	3
EMGT 1000.....	Introduction to Emergency Management.....	3
EMGT 1120.....	Emergency Management Administration and Policy.....	2
EMGT 1140.....	Incident Command System.....	2
ENGL 1110*	English Composition I (A).....	3
OR		
ENGL 1111.....	English Composition I (B).....	1
FYEX 1000.....	First Year Experience.....	1
Choose any course(s) from the Mathematics Electives list**.....		3
		17

Second Semester:

EMGT 1220.....	Emergency Planning.....	2
EMGT 1240.....	Developing Volunteer Resources.....	2
EMGT 1260.....	Mitigation for Emergency Managers.....	2
EMGT 1280.....	Emergency Operations Center Management and Operation.....	2
POLS 2100.....	State and Local Government.....	3
Choose course(s) from the Natural and Physical Science Electives list.**.....		3
		14

Third Semester:

COMM 1050***.....	Fundamentals of Public Speaking.....	2
OR		
COMM 1150.....	Fundamentals of Interpersonal Communication.....	2
EMGT 1350.....	Public Sector Community Relations and Customer Service.....	2
EMGT 2160.....	Exercise Design and Evaluation.....	3
EMGT 2210.....	Public Sector Supervision and Leadership.....	2
EMGT 2380.....	Continuity of Operations.....	2
Choose course(s) from the Social and Behavioral Science Electives list.....		3
Choose course(s) from the Technical Electives list.....		3
		17

Fourth Semester:

EMGT 2340.....	Hazardous Materials Operations and Command.....	3
EMGT 2390.....	Emergency Management Field Service Seminar.....	2
OR		
EMGT 2490.....	Emergency Management Problem Analysis.....	3
EMGT 2360.....	Disaster Response and Recovery.....	3
PHOT 1100.....	Basic Photography.....	3
OR		
PHOT 1105.....	Basic Photography - Digital.....	3
OR		
Choose course(s) from the Arts and Humanities Electives list.....		3
Choose course(s) from general electives.....		3
		14

Program Total: 62

*English course selection is based on placement test results (ENGL 1111 is 4 credits, only 3 credits apply to the degree).



**Students planning to transfer to a four-year college should take a sequence of math and/or science as advised by their counselor.

***Students may substitute either COMM 1000 or COMM 1100. One of these 3 credit courses may be required for students transferring to a four-year college.

Technical Electives: minimum 3 credits

BUSM 1800.....	Essentials of Management and Supervision.....	3
BUSM 2350.....	Labor-Management Relations.....	3
BUSM 2380.....	Training Skills and Techniques.....	3
CRMJ 1110.....	Introduction to Criminal Justice.....	3
EMGT 1700.....	Emergency Response to Terrorism: Basic Concepts.....	1
EMGT 1800.....	Emergency Management Guided Study.....	1
FIRE 1100.....	Introduction to Fire and Emergency Services.....	3
FIRE 1170.....	Fire Protection and Detection Systems.....	2
FIRE 1290.....	Building Construction for Fire and Life Safety.....	3
FIRE 2330.....	Combustion Process and Fire Behavior.....	2
FIRE 2380.....	Emergency Services Safety and Survival.....	2
PHOT 2100.....	Forensic Photography.....	3
PHOT 2200.....	Surveillance Photography.....	2

Mathematics Electives: minimum 3 credits

MATH 1330.....	Statistics for the Health Sciences.....	3
MATH 1600.....	Survey of College Mathematics.....	3
MATH 1650.....	College Algebra.....	4
MATH 2130.....	Business Statistics I.....	3
PHIL 2600.....	Logic.....	3
Other courses as approved in advance by the program director		

Natural and Physical Science Electives: minimum 3 credits

CHEM 1050.....	Chemistry in the Everyday World.....	3
CHEM 1100.....	Elementary Chemistry.....	4
GEOG 1100.....	Introduction to Physical Geology.....	4
GEOG 1200.....	Introductory Historical Geology.....	4
PHYS 1500.....	Astronomy.....	4
PSCI 1100.....	Conceptual Physical Science.....	4
PSCI 1300.....	Earth Science.....	3
PSCI 1400.....	Introduction to Meteorology.....	3
Other courses as approved in advance by the program director.		

Arts and Humanities Electives: minimum 3 credits

ARTS 1120, 2220, 2230; ENGL 2250, 2260, 2280, 2290; HUMX 1100, 1200; MUSC 1200, 1215, 1800, 2200, 2250; PHIL 1500, 2000; PHOT 1000

Social and Behavioral Sciences Electives: minimum 3 credits

ANTH 1160; ECON 1150, 2500, 2600; GEOG 1500, 1600, 2500; HIST 1150, 1250, 2150, 2250; POLS 1300, 2500; PSYC 1500; SOCY 1150

Emergency Management Planning and Administration Certificate (6701)

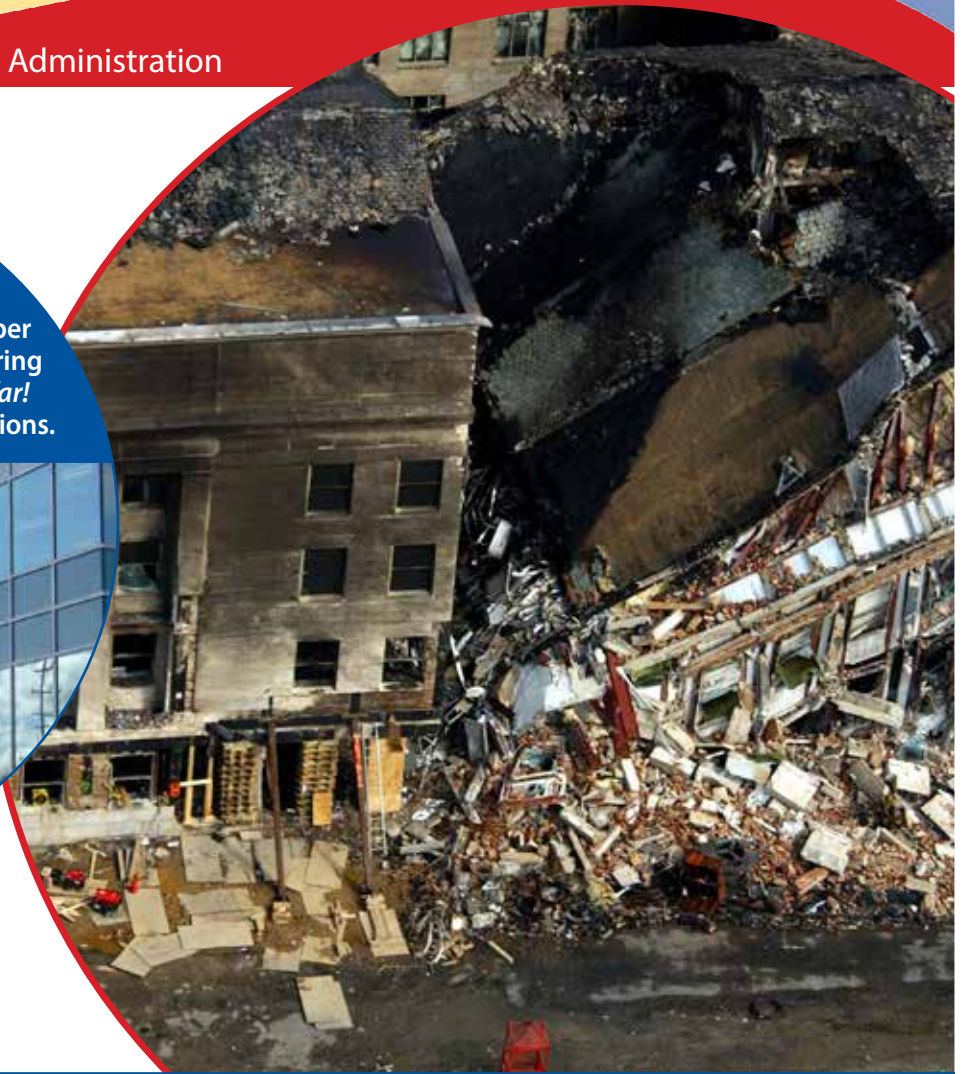
EMGT 1000.....	Introduction to Emergency Management.....	3
EMGT 1120.....	Emergency Management Administration and Policy.....	3
EMGT 1140.....	Incident Command Center.....	2
EMGT 1220.....	Emergency Planning.....	2
EMGT 1240.....	Developing Volunteer Resources.....	2
EMGT 1260.....	Mitigation for Emergency Managers.....	2
EMGT 1280.....	Emergency Operations Center Management and Operation.....	2
EMGT 1350.....	Public Sector Community Relations and Customer Service.....	2
EMGT 2160.....	Exercise Design and Evaluation.....	3
EMGT 2210.....	Public Sector Supervision and Leadership.....	2
EMGT 2340.....	Hazardous Materials Operations and Command.....	3
EMGT 2360.....	Disaster Response and Recovery.....	3

Certificate Total: 28

For more information about our graduation rates, the median debt of students who completed the program, and other important information, please visit lkn.lakelandcc.edu/go/ge/?g=6701.

Emergency Management Planning and Administration

To further your education, Lakeland's Holden University Center offers a variety of bachelor's degree programs from a number of four-year colleges and universities offering you the opportunity to *stay here and go far!* Visit lakelandcc.edu/uc to explore your options.



Curriculum and program requirements are subject to change. Find the most up-to-date information in the college catalog, available on the website at lakelandcc.edu.



Quality Education

Lakeland prepares you for a high-demand career or for transfer to a four-year college or university. Professors at Lakeland are experts in their fields with real-world experience. Small class sizes allow for personalized attention.



Affordable Tuition

Save thousands on your college education. Lakeland's tuition is about one-third the cost of most four-year schools. Financial assistance is available, including federal and state grants, scholarships, loans, and work study employment.



Convenience

Lakeland offers convenient day, evening and weekend class times, and a growing number of online courses. The main campus in Kirtland is only 20 miles northeast of Cleveland. Classes are also offered in Madison.



Focus on Students

Lakeland offers a variety of student services to help you succeed, such as counseling, tutoring, wireless computer labs, career services, free parking, and affordable child care.



Accreditation

Lakeland Community College is accredited through the Higher Learning Commission (HLC) and participates in the Academic Quality Improvement Program (AQIP). The Higher Learning Commission, 230 South LaSalle Street, Suite 7-500, Chicago, IL 60604-1413, phone: 800.621.7440, hlcommission.org.

Lakeland
COMMUNITY COLLEGE